

TEST INSTRUCTION AND EXAMPLE

Items Needed:

1. Flathead screwdriver, copper penny, or similar metal tool
2. Magnet

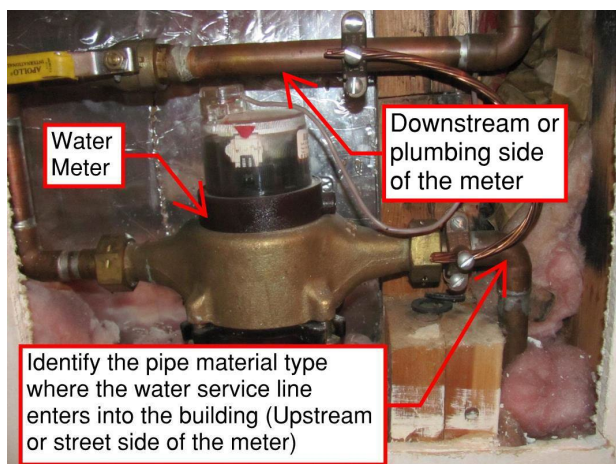
First, locate the water service line coming into the building. You will typically find it in the basement, mechanical room, or wall panel. A water meter is installed on the water service line pipe after the point of entry into the building. See the example pictures below for additional information.

Identify a test area on the pipe **on the upstream or street side of the meter, between the point where it comes into your building and the water meter. If the pipe is covered or wrapped, peel back the cover to expose a small area of the pipe, about six inches, to clearly see its color.**

Using the edge of a screwdriver, penny, or other similar tool, scratch or scrape through any corrosion that may have built up on the outside of the pipe so that the color of the pipe can clearly be seen. Then, use the magnet and the color of the pipe to identify the material of the water service line from the following criteria:

- If the scratched area is shiny and silver-gray, your service line is lead. A strong magnet will not stick to a lead pipe.
- If the scratched area remains a dull silver-gray and a strong magnet sticks to the surface, your service line is galvanized.
- If the scratched area is copper in color, like a penny, your service line is copper. A strong magnet will not stick to copper.
- The service pipe may be plastic, and plastic pipes may vary in color. Plastic pipes are rigid and non-metallic, and information regarding the characteristics of the plastic may be printed on the side of the pipe.
- If the scratched area is brass in color, from dark reddish brown to light silvery yellow, your service line is brass. A strong magnet will not stick to brass.

If you are uncertain, please 1) take a photo of the water service line coming into the building and return it with the test form or 2) indicate that you would like to schedule an inspection with a representative from the Public Works Department.



Lead



A dull, silver-gray color that is easily scratched with a coin. Use a magnet - strong magnets will *not* cling to lead pipes.

Galvanized



A dull, silver-gray color. Use a magnet - strong magnets *will* typically cling to galvanized pipes.

Copper



The color of a copper penny.

Plastic



White, rigid pipe.

Brass



Dark reddish brown to a light silvery yellow color.

Downstream side of the meter

Water Meter

Identify the pipe material type where the water service line enters into the building (Upstream or street side of the meter)

